



Board of Directors

*Ross Rentea MD
President*

*Mark Kamsler MD
Vice-President
Treasurer*

*Philia Kelnhofer
Secretary*

Andrea Rentea MD

Gordon Edwards

Jeremy Klapper, MD

Dear Friends of Anthroposophic Research,

Dear Supporters of our Work,

We have been very active in this past year 2024.

Here is a brief overview of our research in the field of basic and clinical science as well as in foundational research for general anthroposophy.

We are proud to not only continue but also expand our work in the direction of Lilly Kolisko.

None of this would have been possible without your heartfelt support!

Publications of our research work

We are proud to continue our work with rhythms and potencies of substances in a manner that both emphasizes the presence of the “spirit forces in matter” (Kolisko motto) but is also recognized to have high standards in the scientific community.

Below are the five studies relevant to this year’s work:

1. Pilot Study: New Aqueous Extracts of the Mistletoe (Viscum Album L.) Plant, Diminish In Vitro Cell Proliferation of The NSCLC Cell Line with EGFR Mutations HCC 827

Abstract

Non-small cell lung adenocarcinoma with EGFR mutations continues to be a vexing problem due to the ability of the cancer to rapidly develop drug resistance. In vitro studies with the non-small cell lung adenocarcinoma cell line HCC827 (with an acquired mutation in the EGFR tyrosine kinase domain, E746 - A750 deletion) are relevant to the finding of increasingly effective treatments. Pharmaceutically processed extracts of mistletoe, Viscum album Loranthaceae, have been shown since the 1920’s to have potential in cancer therapy. They are currently the most frequently used natural preparations in complementary cancer treatments. In this pilot study we demonstrate

that newly prepared standardized extractions of mistletoe (*Viscum album*, L.), from different host trees, are shown to significantly diminish the cell proliferation of the HCC 827 cell line.

Authors: R. Rentea, M.Kamsler, M. Mueller

DOI: 10.19080/CTOIJ.2023.25.556160

2. Therapeutic applications of *Viscum Robinia* RK 30X

Abstract

The spiritual significance of the robinia tree and the mistletoe (*Viscum album* L.) growing on the robinia tree can be better understood if the anthroposophic interpretation supported by botany, mythology and other healing systems is considered. *Viscum Robinia* Kolisko (RK) in its potentized form, dispensed orally, has been found helpful to strengthen the soul life of those patients who have lost faith in the possibility of healing, are overcome by worries, cannot let go of previous trauma, feel unable to go on and to persevere in spite of life's challenges. This soul condition is frequently connected to digestive disturbances. Five clinical cases are presented.

Authors: R. Rentea, M.Kamsler

<https://doi.org/10.14271/DMS-21763-EN>

3. Pilot Study: Evidence that High and Ultra-high Diluted Extracts of the anti-tumor active Mistletoe (*Viscum Album* L.) Plant Inhibit but may also Stimulate in Vitro Cell Proliferation of K562 Leukemia Cells

Abstract

Mistletoe extracts are widely used in Central Europe, as well as world-wide, as an adjuvant cancer therapy. In the laboratory, high doses of mistletoe extracts are largely considered to be uniformly inhibiting on cell proliferation in vitro. Some controversy has arisen however whether low doses of mistletoe extracts can be also stimulating and thus whether clinical low doses of mistletoe should be more cautiously administered in a clinical setting. We provide evidence that not only low but also highly and ultra-highly diluted extracts of mistletoe can both inhibit as well as stimulate in vitro cell proliferation.

Authors: R. Rentea, M.Kamsler, M. Mueller

DOI: 10.19080/CTOIJ.2024.25.556204

4. Pilot study: rhythmical behavior of ultra-high potencies of substances in cell cultures

Abstract

Research in the hormetic field has demonstrated a bi-phasic dose response in substances such that a high dose of a substance being inhibiting/toxic can have an opposite effect at a low dose where it becomes stimulating. Hormesis confines itself to measurable levels of the substances/stressors. However, homeopathic research has shown that these bi-phasic enantiodynamic effects of substances occur even at ultra-high dilutions (potencies), beyond log

24. In 1923 R. Steiner and L. Kolisko demonstrated a new phenomenon in which the enantiodynamic effects alternate semi-sinusoidally between inhibiting and stimulating activities. We have studied this phenomenon in several substances in cell cultures, confirm Kolisko's and R. Steiner's findings and discuss the significance of this rhythmical phenomenon. The mechanistic explanation is still to be elucidated but anthroposophical insights give a path to a more comprehensive understanding.

Authors: R. Rentea, M.Kamsler, M. Mueller

<https://doi.org/10.14271/DMS-21805-EN>

5. Moon transits against the backdrop of different sidereal constellations affect the growth of various in vitro cell cultures: a pilot study

Abstract

Multiple scientific studies have reported that the lunisolar gravitational forces causing tidal accelerations on the Earth influence the physiology and behavior of diverse life forms through embedded genetic timers. These cyclical clocks are also influenced by the periodic light changes of the Moon phases. Aside from experimentation with simulated star light no connection has been demonstrated in the natural environment to the far planets or stars. An exception to this constitutes the work of M. Thun who in decades of observations demonstrated that Moon transits through sidereal constellations can affect vegetable crops. We hypothesized that cell cultures would behave similarly to plants and would show an enhanced growth/proliferation when the Moon transited some constellations and not through others. K562 and HCC827 cells were cultured for 72 hours. The results confirmed that when the cell cultures were started on days when the Moon was in Cancer, Scorpio or Pisces the cell proliferation was significantly increased compared to the proliferation when the cell cultures were started on days when the Moon was in the Taurus, Virgo and Capricorn constellations. We attempt an explanation for this phenomenon that hypothesizes that embedded genetic star responsive timers occur in individual cells.

Authors

Razvan Rentea, Mark Kamsler, Andrea Rentea, Malory Mueller

Accepted for publication in the Merkurstab Journal for February 2025

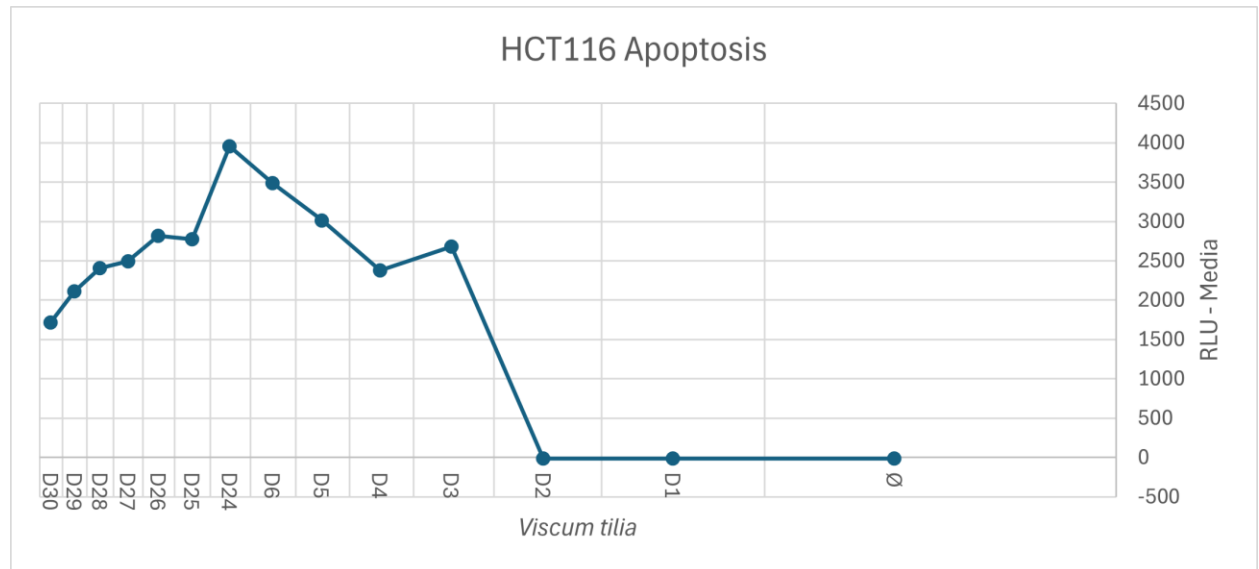
New: Research & Remedies

Mistletoe Research

Recently, we have been able to continue our work with mistletoe extractions and have been able to show that even ultra- high potencies (D24-D30) that contain only the

spiritual forces of the original plant and nothing of the original substrate can still have the biologically extremely important ability to induce the so-called apoptosis. This apoptosis phenomenon also known as programmed cell death is a means by which cells can be disposed of in an “orderly fashion” so that no damaged or destructive material is passed on. It is in a way a vital form of detoxification.

We show here an example where the mistletoe (*Viscum album*) from the linden tree (*tilia*) was cultured in the cells together with colon cancer cells (HCT116).



As a reminder our mistletoe extracts are the result of long and complex procedures originally suggested by R. Steiner. Among others, the summer and the winter mistletoe have to be combined in a precise manner. We obtain the mistletoe from Romania and carefully preserve the mistletoe from one season until combined with the mistletoe of the other season. Here you can see our Chief Researcher Mallory Mueller during one such step.



Root Research



We have researched, then developed, potentized (6X) remedies from the roots of the cardinal seven trees that R. Steiner demonstrated in the architecture of the First Goetheanum building. Penetrating all the way into the substance, they represent crucial stages of the world evolution.



Seed Research

As you can see on our website, we have spent years developing a methodology, the “Kolisko Validation”, to determine if a high potency (where there is no more physical substance of the source material present) is still active or not. We are renewing this effort with hopefully even more accuracy. These pictures are from the work with the new set up.



Research with the 5 Organs

Remedies from potentized organ substances have long been used to strengthen the etheric (life) body. R. Steiner’s insights confirmed that the liver, lung, heart, spleen and kidney are the pillars of the various spiritual members of the human being. We use a suggestion that R. Steiner gave for increasing the healing forces of these potentized substances. This method entails exposing the initial potencies of the organs to the morning and evening day forces. In the pictures below one can see the research phase in preparation of the subsequent remedies.



Foundational work in anthroposophy

As always, we don't forget the anthroposophical mother source from which our inspirations came.

In commemoration of the 100th year anniversary of the immensely important year 1924, we worked for the better part of this year 2024 toward the annual Kolisko conference (October 2024) entitled "The Saturn Path" as befitting R. Steiner's intentions for 1924. (Details available on the Kolisko website). In upcoming online presentations, we will revisit the most important aspects for those who want to review these concepts and for those who could not attend. Of course, the intense eurythmy group work, the performances, the discussions cannot be duplicated in webinars, but we will be able to share the practical details we have worked out exploring "how human beings are now called and able to speak to the stars".



Our grateful thanks offered to the eurythmists for their wonderful contributions; to all our staff who worked tirelessly (also before and after) to make it all festive and welcoming and last but not least to the wonderful participants who were open minded, supportive and attentive.

Name Change !

We are sure you noticed our new spelling of Lilly Kolisko's name in the logo and probably received our email regarding this issue. Nevertheless, allow us to repeat it here just incase some may not have seen the email:

Dear Friends,

Many of you may have noticed that the spelling of our Kolisko Institute name has recently been slightly changed.

Before: Lili Kolisko Institute

Now

Lilly Kolisko Institute

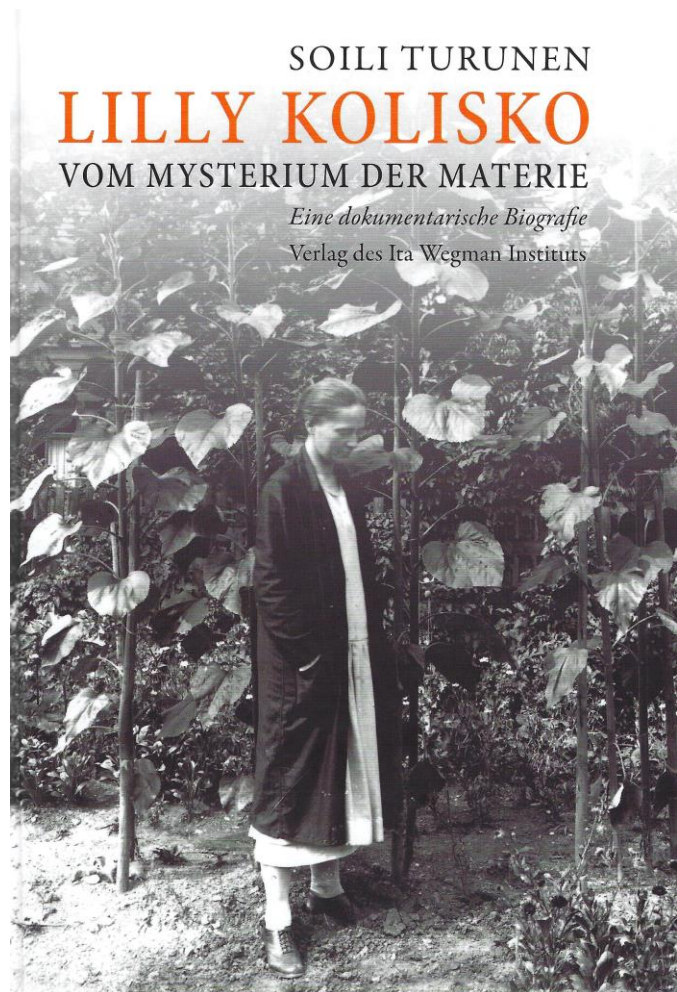
Here is the reason:

In years past we found L. Kolisko's name spelled as Lili, so we went with that. Recently however, a book was published where enough insight was given to the "Lilly" spelling being her chosen name so we felt that a change/correction to the spelling of her name was appropriate.

L. Kolisko's maiden name was Elisabeth Anna Noha. After she married her husband Eugen Kolisko MD, she noticed that the monograms for both of them would be E. K. so she decided to change to Lilly. (Possibly Lilly was meant to be the abbreviation of Elisabeth>Lisbeth>Lilly...but I am speculating here). One thing is for sure that she signed all her letters with her chosen Lilly. She authored her books and published articles under just L. Kolisko.

We are happy to honor her this way.

(Lilly Kolisko, Vom Mysterium der Materie, Soili Turunen, Verlag Ita Wegman institute, 2024)



However, to continue our Work, we need Your Support

Dear Friends,

Whether addressing basic science, clinical applications or general anthroposophy they all have one common requirement: search and re-search in order to ensure a path into the future. Without them, stagnation follows and that means death of the field.

R. Steiner called his path “Spiritual Science” and was hoping that the so-called School of Spiritual Science would be a center of research. Perhaps this is why he valued Lilly Kolisko so highly since she showed through scientific experiments that indeed spirit was demonstrably descending into matter.

We try to follow those intentions.

However, your help is sorely needed.



We are running out of money!!

- Experiment ingredients are ever more costly.
- Overhead costs are constantly increasing.
- We are charging nothing or very little for the online webinars to enable as many as possible to attend (asking for donations).
- Our conference left us with a deficit of \$2,000 and that despite no honorarium to the main speaker, minimal to the artists, and in spite of the financial sacrifices of the participants who paid registration dues. (Scholarships were given for many to enable them to participate.)

Currently, we keep going due to the vital support of one large donor (continuation uncertain), many smaller donations, and personal sacrifices of the main co-workers.

Any kind of scientific work enhances anthroposophy.

But to keep going we will need to raise a minimum of \$200,000 for the budget for next year. This may seem daunting but if the community as a whole would participate it would be possible.

There are many ways for how you can help, donate and/or make other suggestions:

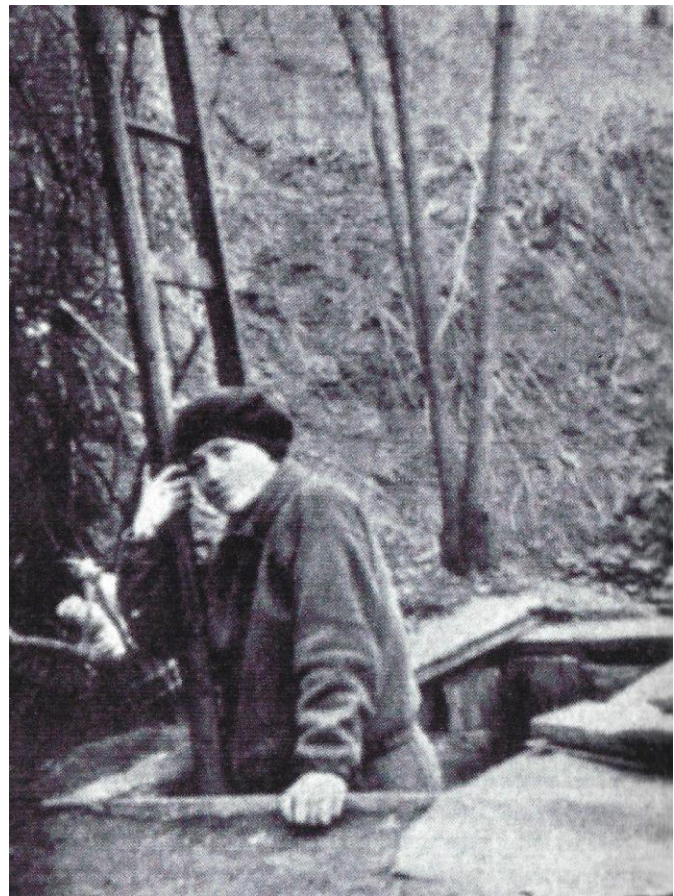
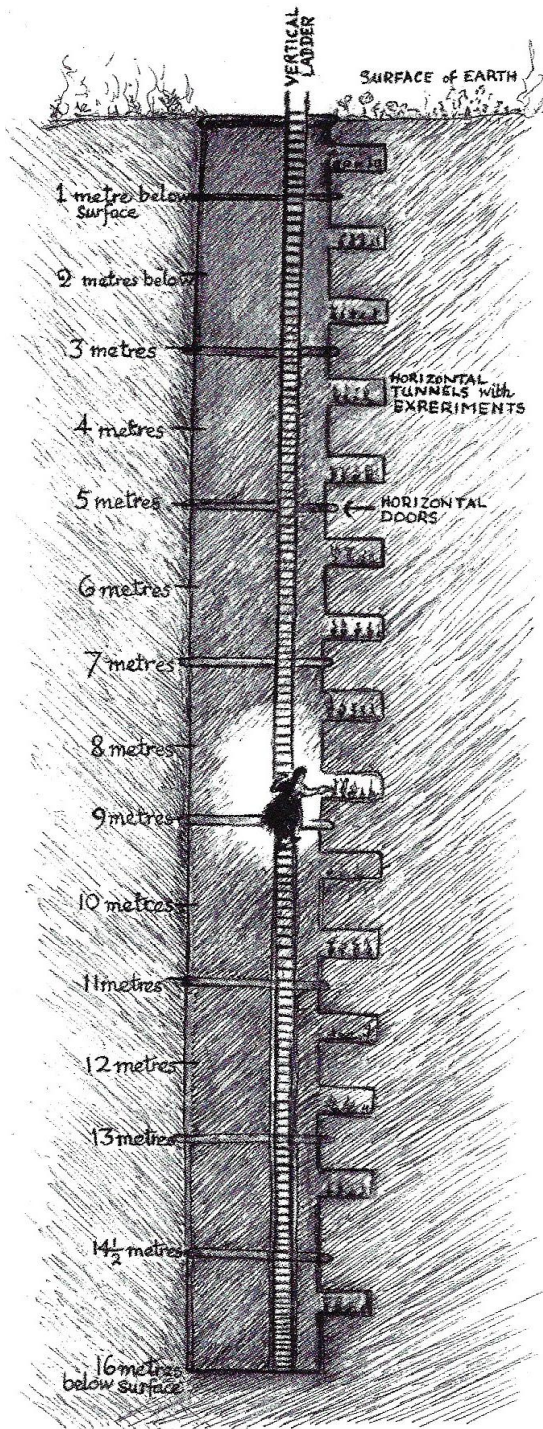
Make a [tax -deductible donation](#) and/or

- Include us in your will/legacy,
- Spread the word; make us known to your friends.

You are welcome to make specific notations if you want your contribution to go to a specific activity- webinar, substance research, outreach, etc. Thank you!

With your generous help we hope to continue our work into the future.

Finally, yet another example of the dedication of Lilly Kolisko and to the depth to which she literally went to prove R. Steiner's work.



At one point she asked that a vertical tunnel be dug for her to descend into, in step wise manner, in order to show how planetary forces affect crystallization processes even at distances that were so deep beneath the earth surface that no physical influence from above could be assumed. Here are some photos from the S. Turunen book.

Dear Friends, one more announcement:

In order to continue our multiple experiments, we need another research assistant. Here is the text from an email that was sent out recently. Would you please pass this along to anybody that you feel might be interested. An interest in anthroposophy is required.

The Lilly Kolisko Institute for Anthroposophic Medicine is looking for a coworker in the research lab:

- A dedicated person who would be engaged in a variety of biological laboratory research tasks (connected with/expanding on the research of L. Kolisko) such as
 - Preparing chromatographs of various substances and especially new research into the activities of the potencies of those substances.
 - Working with growing seeds to determine which potencies of substances inhibit/stimulate the growth of the seeds (in general wheat seeds)
- Full time
- On site at the Lilly Kolisko Institute in Hartland, WI
- Adequate salary
- Ideally flexible with an occasionally varying work week schedule when needed to work with specific star constellation/planetary positions
- Please send a note with interest to info@koliskoinstitute.org.

Thank you!

For the Kolisko Team,

R. Rentea MD, M. Kamsler MD, A. Rentea MD



Andrea
Rentea MD



Thank you!

Malory Mueller



Ross Rentea MD



Heidi
Swan



Mark Kamsler
MD



Philia Kelnhoffer



Addie Buck



Dominique Miller



Patrick Yockey



Betsy Schilz

www.koliskoinstitute.org
www.truebotanica.com